

Germantown High School Band Program



2024-2025 Handbook

Justin Harvison, Director of Bands

Allison Taylor-Craft, Assistant Director/Color Guard Director

Ryan Saul, Assistant Director/Percussion Director

Darius Valentine, Assistant Director/Jazz Bands Coordinator

Jim Peacock, Assistant Director/Middle School Coordinator

Josh Craft, Assistant Director/Percussion Director

Carrie Swindoll, Assistant Director/Middle School Guard Director

Ethan Marcus, Visual/Movement Director, Choreographer

Foreword

The success of any organization is dependent upon the spirit, pride, leadership, teamwork, dedication, and cooperation of its members and parents. Certain rules, policies, and procedures are necessary so that the overall goals of the group are met and the welfare of each individual member is best served.

By accepting membership in the Germantown High School Band, you are agreeing to perform to the best of your abilities and work together with the band staff in making this year's band the finest musical organization that our combined efforts can produce. In order for this to occur, students and parents will need to be responsible, attentive, and respectful, have a positive attitude, and follow the MCS Handbook. The directors will do their best to ensure that every student will be provided the opportunity to be successful, regardless of their ability as an incoming student or of their career ambitions following graduation.

The Germantown band staff has developed this handbook to familiarize each band member with general operation and procedures of the Germantown Band and standards by which all band members are expected to conduct themselves. The handbook is not intended to be all-inclusive, as every possible situation and question cannot be predicted in advance; however, a thorough knowledge of these materials is essential to the smooth operation and success of the band this and every year.

Mission

In the Germantown High School Band, we are dedicated to fostering musicianship and community where every member embraces their self-worth, pursues excellence in achieving our collective goals, and nurtures a sense of belonging within our band family. Through rigorous musical education, exploration, and passionate performance, we endeavor to install in our members a lifelong affinity for music while fostering an environment of respect, collaboration and personal growth.

Goals and Objectives

Mental and physical discipline

- Develop powers of concentration
- Memorize music
- Learn techniques of preparation as they relate to group and individual performances
- Develop self and group discipline

Citizenship through group endeavor

- Develop leadership abilities
- Develop responsibility and ability to follow instructions
- Develop ability to cooperate with others and to work as a team member
- Develop diligence
- Develop mutual respect
- Develop the ability to take initiative

Physical conditioning

- Develop strength, stamina, endurance and coordination

Cultural growth

- Provide opportunities to attain knowledge of music history through performance of various types of instrumental literature

Value Judgments

- Ability to make musical value (as they pertain to a musical setting) judgments through critical listening
- Recognition of quality of sound, pitch, style, tempo, rhythm, blend, balance, phrasing, dynamics, and articulation

Music theory

- Know and utilize note values and rest
- Know and utilize keys, key signatures, and scales
- Know and utilize musical terms, signs, and symbols
- Recognize and tune intervals and harmony
- Ear training/listening skills

Proper instrumental technique

- Care of the instrument
- Correct posture and playing position
- Develop the embouchure/stick grip/hand position
- Develop characteristic instrumental tone

Conduct/Expectations

- Develop proper breathing techniques
- Develop technical instrumental proficiency (fingering, articulation, rudiments, scales, etc.)

Creative self-expression

- Express oneself in every performance experience
- Explore careers

The Germantown High School Band will strive to:

- Provide any interested student with opportunities for musical knowledge, musical fellowship, and fun through participation in band
- Provide for the mental, physical, social, and emotional development of students
- Instill pride and discipline in each student
- Provide each student with solo and group endeavors to achieve personal goals and satisfaction
- Provide basic psychological needs such as recognition, belonging, self-respect, and a feeling of achievement

Communication

The directors encourage positive communication and are willing to discuss any aspect of a student's progress in band with his/her parents. Specific directors' office phone numbers and email addresses can be found on the band web site.

Every attempt necessary will be made to get information and reminders out in the most productive manner possible to both students and parents. Directors utilize REMIND 101, a one-way text blast, to send important information to smartphones. Announcements are posted on the band hall TV and made daily in class. Additionally, weekly announcements and the calendar can be found at <http://www.madison-schools.com/Domain/1591>. The directors and boosters will also utilize emails for longer communications. Ultimately, it is the responsibility of the student to listen and look for information and announcements. **Students and parents MUST sign up for our online system and REMIND to ensure adequate and accurate communication.**

Band members will observe all policies set forth by Germantown, in addition to the following, as they pertain to the instrumental music setting:

- Any behavior, which is not representative of good citizenship, as perceived by the band staff, may result in the student's dismissal from the activity at hand as well as the band program. This also applies to the actions of student leaders in both public and private events.

- All students are expected to conduct themselves in accordance with the MCS Handbook at all times. Display of profanity, temper, flagrant violation of rules, etc., will not be tolerated. Individual behavior during a band function is a reflection of the group.
- Students will follow directors' instructions.
- Students will be in their assigned rehearsal area ready to work at the set rehearsal time with all equipment, including music, pencil, instrument, and all supplies to rehearsals daily (see detailed supply list for each instrument).
- Students will keep hands, feet, and other objects to themselves.
- Students will not use or play on equipment they do not own without permission from a director.
- Students will not touch, handle, borrow, or use anyone else's instrument, uniform, or personal belongings.
- Students should request permission to speak by raising their hand and waiting to be acknowledged. All rehearsals are expected to be extremely quiet so that time will be utilized wisely and as efficiently as possible.
- When allowed in the band hall, either before or after school, students will not disturb any rehearsal in progress.
- Students will respect the property of others and return their equipment to its proper storage place when not in use. Students should keep their equipment in the designated storage area and keep said storage area clean and neat in appearance. Students who demonstrate great difficulty with this may lose the privilege of having a storage area in the band hall.
- Students will not deface or mark on music stands, chairs, walls, etc.
- Students will not be permitted to eat or drink (other than water) in the band hall unless explicitly permitted by band directors for certain situations (pre-game/travel meal, etc.). No soft drinks, coffee, or teas are permitted in the band hall. Students that arrive with those will need to consume them outside the band hall before entering—finishing said drinks before arrive is not an excuse for tardiness.
- Students will not write on dry-erase board without permission from a director.
- Students will utilize their assigned storage slot/locker for instrument cases during rehearsals. Cases should not be brought into rehearsals. After playing your instrument, cases should be closed, latched and properly stowed. Storage slots/lockers will be kept clean and tidy. The only materials that should be kept in storage slots/lockers are materials needed only for band. Storing food in these spaces overnight IS NOT PERMITTED.

Conduct/Expectations Cont.

For Band Staff

- The staff goal is to be a teacher, not a parent and not a performer/musician.

- The band staff strives to make a positive impact in the lives of students and build relationships to instill lasting positive qualities in our students.
- Everything directors do matters and has purpose when it comes to students. Directors have a (potential) 7 year window from 6th to 12th grades to teach and impact students in a positive way.

For Parents

- The goal is to be their parent, not a teacher or band director.
- Please be supportive of the band program at home. If you have an issue with a director or the program, set up a parent conference. This will be the better vehicle for meaningful conversation as opposed to detrimental gossip. Bad attitudes toward the program or band staff will only hurt the band program and the students as a whole.
- **Participate to the extent possible in all fundraisers and booster volunteer activities, including concessions stand and Chili Fest.**
- Band is an ELECTIVE, and is not required for graduation, so it is a privilege.
- Please follow the EDP (Event Day Procedures) at every event. These guidelines will be provided prior to games and competitions to help band staff ensure the safety of students.
- Arrange appropriate timely transportation to and from events and practices.

Boundaries

We will not discuss the outcomes of auditions, selection of leadership positions, soloists, etc. We are the professionals; please allow us to do what is best for the band. While we encourage you to set up a conference to address any problems, please note that scheduling a meeting to discuss audition outcomes is something we will not do. If your student would like to ask how he or she can improve or work towards goals within the band, we can certainly give them that type of feedback. Furthermore, We will not discuss any parent-director issues immediately before, during or after an event (i.e. rehearsals, games, contests). If you feel that a discussion is needed concerning your student, you will need to schedule a parent-teacher conference through the GHS counselor's office.

Parents see the best in their child, and that's a good thing. But, in the event of a conflict, disagreement, or other issue, we ask that parents reach out to directors for clarification and give the adults the benefit of the doubt.

Excellence

As with any band or music education program where the students' self-worth is considered paramount, every band student in the Germantown Band is expected to try and develop their talents on their instrument. Attention to instruction, a desire to learn, and a commitment to the legacy they will one day leave are all part of being the best student they can be each year. There are a number of opportunities (i.e. private lessons, leadership roles, All-State Band auditions) that students can use as a catalyst to work toward becoming the best musician and person they can be. Simply put, we teach excellence through music in the GHS Band. Thus, we expect all students to practice regularly, act as exceptional young adults and contribute to their band, school and community in a positive way. Anything less is unacceptable.

Sexual Harassment

Inappropriate verbal or physical conduct of a sexual nature at school is prohibited by school board policy. Sexual harassment is prohibited against members of the same sex as well as against members of the opposite sex. Any student who experiences a sexually offensive comment or action by another student or adult at school or school-sponsored function is strongly encouraged to tell a parent, teacher, counselor, or principal. Parents/guardians who have reason to believe that their child has been subjected to sexual harassment should report this behavior to the principal. Students in violation may be removed from the extra-curricular portions of the program for a time period established between the directors and the administration. Reinstatement will be evaluated after the end of the school year.

Digital Citizenship

Maintaining a higher standard of conduct will also include ensuring that band member websites and communication on social media are appropriate. The internet is a worldwide, publicly accessible form of communication. Any communication appearing on the internet is public domain, even if it is marked private. Students are responsible for their personal websites and postings, as well as posting from or on other students' websites. of inappropriateness include but are not limited to profane, foul, or disrespectful language (abbreviated or alluding to), pictures, suggestive poses, clothing, references to alcohol, drugs, and/or tobacco, and postings (either verbal or photos) that could be interpreted as being negative or threatening towards other MCS teaching staff or band members, or that demonstrate poor sportsmanship or a disrespectful attitude towards other bands. Any such incident will result in review by the principal (or designee) and may lead to probation or dismissal from band.

Band students who violate the above guidelines shall be subject to the following:

- Upon confirmation of a violation, the member will be asked to remove any offensive items from the website(s) and will be asked to give an apology and plan of action to deter this behavior to the principal, directors, and band students. Parents/guardians will be contacted and made aware of the offensive behavior.
- If a violation occurs that is deemed to be of a more serious nature, including but not limited to a threat, bullying, inappropriate and/or foul language, or a series of violations, the student may be subject to a higher level of discipline as determined by the director and school administration, such as suspension, probation, or dismissal from band.

Due Process

All Germantown students are entitled to due process with GHS Administration in accordance with MCS guidelines. Our goal as a staff is to ensure that all students are treated fairly. Please contact one of the directors if you have any concerns. We will work with you to resolve problems. We are here to provide a quality music education for all our students.

Financial Obligations

It is the philosophy of the Germantown High School Band that no student should be denied the privilege of band membership due to financial hardship. The Germantown Band Boosters are able to set up an alternate payment schedule through our executive committee if needed. Further details pertaining to payment assistance/installments for fees of any kind can be obtained through contacting a member of our GBB executive committee at gbandboosters@gmail.com.

All fees are non-refundable and non-transferrable.

The band fee for the 2024- 2025 Academic Year for the Germantown High School Band is \$300. This has been approved by GHS administration and by the School Board of the Madison County School District. All fees can be paid through our online system- BoosterHub or by cash, check or Venmo (@gbandboosters).

Additionally, for marching season, a costuming fee will be assessed:

- Woodwinds, Brass and Percussion members will pay a costuming fee of \$250.
 - *Includes student's marching band performance costuming (includes gloves; returning members can reuse last season's shoes and new members will need to purchase shoes; long black socks are also required)*
 - *Students keep their costumes at the conclusion of the season.*

- Color guard members will pay a costuming fee of \$250.
 - *Includes student's marching band color guard performance costuming (includes gloves but not shoes)*
 - *Students keep their costumes at the conclusion of the season.*

Yearly Band Fees (\$300) are due no later than Friday, May 31st, 2024 and may be paid as early as May 15th, 2024

Costuming fees (\$250) are due no later than Wednesday, July 31, 2024 and may be paid as early as May 15th, 2024

Bands of America Trips Fee-\$450- Includes the BOA Super Regional- St. Louis, MO and the BOA Memphis Regional with a fun activity included during the Super Regional.

Due no later than August 31st, 2024 and may be paid as early as May 15th, 2024

The Germantown Band Boosters are able to set up an alternate payment schedule through our executive committee if needed. Further details pertaining to payment assistance/installments for fees of any kind can be obtained through contacting a member of our GBB executive committee at gbandboosters@gmail.com. **All fees are non-refundable and non-transferrable.**

Informal Garments

HORNLINE/PERCUSSION:

- Shoes: All hornline/percussion students must have the approved black *Drillmaster* shoes for performances. No other shoe will be acceptable. Cost: \$52. Students that need this shoe will be fitted for these during July band camp. Returning members can use their shoes from the previous year provided they fit and are in good working condition. Tennis shoes are acceptable for rehearsals.
- Germantown Band Show Theme Shirt: Worn at designated games, pep-rallies, informal concerts/events, etc. (provided)
- Germantown Band Pep Band Shirt: Worn at all pep band games. (provided)
- Germantown Band Rehearsal Shirt: Worn at rehearsals (Thursday nights required to wear white shirt but doesn't have to be rehearsal shirt) approximate cost is \$15 (form will be

mailed out in pre-season packet. This is an optional purchase, but all members must have a white shirt and black shorts for Thursday night rehearsal and costuming undergarments)

- Germantown Band shorts (female and male options): Worn at rehearsals. Not Required. Approximate cost: \$15

COLOR GUARD:

- Shoes: For performances, jazz shoes are required. Cost is approximate \$55-65 and can be purchased/fitted during July band camp.
- Rifle: All required. Cost is approximately \$45. A form will be posted on canvas for this. Class of 2025 will not be required to purchase a rifle and may use the rifle assigned to them. All other members of the color guard will need to purchase their own personal rifle. Sabres will be purchased by the band and assigned to those that spin them.
- GHS Color Guard Tank Top: Required for rehearsals. Approximate cost is \$28. A form will be posted on canvas for this.
- GHS Cardinal Guard Shirt: Required for rehearsals and/or informal events. Approximate cost is \$20. A form will be posted on canvas for this.
- GHS sophie shorts: Required for rehearsals and/or informal events. Approximate cost is \$25. A form will be posted on canvas for this.
- GHS Backpack: Not required. Form will be mailed in pre-season packet. Approximate cost is \$45. A form will be posted on canvas for this.
- Color guard members will also need to purchase supplies for hair and make up as communicated by color guard directors. This is unique to each show theme.
- Black color guard jacket. Required if you do not have one already. A form will be posted on canvas for this.
- Black joggers. Required. A form will be posted on canvas for this.
- Uniform Cleaning: Uniform cleaning and maintenance is dependent on the student and parents. Bibbers will need to be dry cleaned at the end of the semester following the last parade.

Fundraising

The Germantown High School Band and Band Boosters engage in fundraising activities throughout each year. The monies raised from fundraising activities will be credited to an account held by the Boosters and are subject to all state laws. This money will be used only for the direct benefit of the band program. All members and parents are expected to participate to the extent possible in all fundraising efforts in a program-wide attempt to keep fees and cost to participate as low as possible.

Care of the Band Facilities

Refreshments – No gum, food or drinks are allowed in the building except when authorized by the directors. Students will not be permitted to eat or drink (other than water) in the band hall unless explicitly permitted by band directors for certain situations (pre-game/travel meal, etc.) only in designated rooms designated by band staff. No soft drinks, coffee, or teas are permitted in the band hall. Students that arrive with those will need to consume them outside the band hall before entering—finishing said drinks/food before arrival is not an excuse for tardiness.

Litter – All trash (paper, broken reeds/drum sticks, etc.) is to be deposited in the wastebaskets provided.

Vandalism – Acts of vandalism or the willful misuse of school property will be dealt with severely and appropriately. Every band member is responsible to help the director's monitor the facility and control vandalism, which includes writing or carving on walls, destroying music, or breaking school property.

Workroom – Absolutely no student is allowed in the workroom without permission. The copy machine is off limits without permission.

Upstairs space – Are off limits unless given explicit permission by a director.

Practice & Ensemble Rooms – Are designated for practicing, not social gatherings.

Offices – Please knock, and if you are invited in, you may enter. Otherwise, they are off-limits to students. Students may not use director's phone without permission.

Attendance

In order to have and maintain a high-quality band program, attendance from all members is essential. While the GHS band follows all school and district policies and procedures, the following additional guidelines outline the attendance procedures and policies for the GHS band. These attendance guidelines also apply to activities held outside of the school day. Failure to participate in either rehearsals or performances may result in student removal from the organization at the discretion of the band directors.

Roll Check

Roll will be checked and documented promptly at the start of rehearsal.

Tardiness

Students not in their designated area at the appropriate time during the school day will be marked tardy. If a student is 15 minutes late or more, they will need to report to the front office to receive a check-in form before reporting to class.

If tardy for after school rehearsal or event a student will need to provide parent documentation as to why they are late.

Excused Tardiness

Tardiness may be excused at the discretion of the directors. Appointments etc. will not be an excuse for tardiness unless prior arrangements, with written documentation, are made and approved by a director.

Unexcused Tardiness

Students who have more than 3 unexcused tardy may be subject to one of the following consequences at the discretion of the band directors:

- Loss of spot as a performing member
- Loss of marching privilege (for one game) at a football game
- Requirement to make up 15 minutes of fundamental marching and/or playing. They may also be subject to a graded pass-off assignment.

Absence

Students not present at the appropriate time may be marked absent.

Excused Absence

Absences will be excused at the discretion of the directors. Appointments, work etc. will not be an excuse for absence. Absence due to personal illness requiring medical attention, death in the family, or other extenuating circumstances (approved by director) may be considered for excused status. Students who are continually ill may be required to provide a doctor's note releasing them from participation in order to ensure the well-being of the child and to reduce concerns of the band directors. If in doubt, an absence should be checked with a director.

Special note: Students have three free afternoons per week during the marching band season. These days should be used for appointments and routine professional visits. During the concert season, students will generally be responsible for only one weekly morning sectional rehearsal and one to two ensemble rehearsals. Thus, students will have ample days available for appointments.

Unexcused Absence

Students who have an unexcused absence may be subject to one or more of the following consequences at the discretion of the directors:

- Make up missed time.
- Loss of Leadership Team position.
- Loss of spot as a performing member.
- Loss of marching privilege for one game.
- Loss of attendance privilege at one game.
- Removal from the marching band or band program.

Parents will be notified immediately.

Daily Supplies

The following list is what each student should plan to bring to the appropriate rehearsal and/or performance. Other items may be added at the discretion of the directors.

- All issued music
- Pencil
- Instrument
- All supplies relative to their instrument
- All marching related equipment (during marching season)
- Drill/dot book/lanyard/coordinate sheet/UDB
- Band Binder
- Other marching equipment as needed (could vary from year to year)

In addition, a metronome, tuner and music stand should be part of a band member's tools for home practice.

The following list for each instrument is composed of preferred or highly recommended supplies and equipment. Any deviance from this list should be approved by a director. Private lesson teachers may make recommendations that stray from this list after consulting with an GHS band director.

Flutes

- Tuning and cleaning rods
- Cleaning cloth
- Key oil
- Approved type instrument (see MCS list)
- Screwdriver Set

Clarinets

- Three good playable reeds. Vandoren Blue Box, and V-12's are the approved reeds.
- Reed guard (plastic, with rubber bands to hold reed in the guard are preferred)
- Ligature (Rovner ligature recommended)
- Proper mouthpiece with cap (Vandoren 5 RV Lyre or M13 lyre)
- Key oil (Case Storage)
- Bore oil (Home Storage)
- Cleaning swab (silk handkerchief style, with covered weight)
- Approved type instrument (Buffet R13 preferred)
- Cork grease

Saxes /Bass Clarinet as applicable

- **THREE GOOD PLAYABLE/WORKING REEDS AT ALL TIMES!**
- **VAN DOREN SILVER BOX 3s**
- Reed guard
- Ligature
- Proper mouthpiece (Selmer C star)
- Neck Strap (Bass Clarinet players included)
- Pad and neck saver
- Approved type instrument

Trumpet

- Valve oil (Al Cass)
- Polishing cloth
- Mouthpiece (Bach 3c or 5c) or other director approved mouthpiece
- Approved type instrument
- BERP

French Horn

- Valve/Rotary oil - (Al Cass - Marching Horn) (Holton Rotary - Concert Horn)
- Polishing cloth
- Approved mouthpiece (Holton Farkas)
- Approved type instrument (provided by district)
- BERP

Trombone

- Slide cream or Slide-O-Mix (preferred)
- Spray Water Bottle
- Polishing Cloth
- Mouthpiece (Schilke 51 or Bach 6 ½ AL, or 5G) or other director approved mouthpiece
- Approved type instrument
- BERP

Baritone/Euphonium

- Valve oil (Al Cass)
- Mouthpiece (Bach 5G or 51D) or other director approved mouthpiece
- Polishing cloth
- Approved type instrument (provided by school)
- BERP

Tuba

- Valve/Rotary oil - (Al Cass –Sousa Valves /Holton – Concert Rotors)
- Mouthpiece (Bach 24 AW, Helleberg, or Miraphone Rose Model)
- Polishing cloth
- Approved type instrument (provided by district)
- BERP

Percussion

- Concert Season ALL Percussionists & Marching Season Rack & Timpani:
- [Steve Weiss Stick Pack](#)
- Marimbas – 2 Pairs [Vic Firth Ian Grom M262 – Medium Marimba Mallets \(Blue/Black\)](#)
- Vibraphones – 2 Pairs [Vic Firth Iain Moyer M274 – Medium Vibraphone Mallet](#)
- Marching Snare - [Vic Firth Mike Jackson Snare Drumstick](#)
- Tenors – [Vic Firth Bill Bachman SBBTS Tenor Sticks](#)
- Bass 1 - [Vic Firth MB1H Marching Bass Drum Mallets](#)
- Bass 2 - [Vic Firth MB1H Marching Bass Drum Mallets](#)
- Bass 3 - [Vic Firth MB2H Marching Bass Drum Mallets](#)
- Bass 4 - [Vic Firth MB3H Marching Bass Drum Mallets](#)
- Bass 5 - [Vic Firth MB4H Marching Bass Drum Mallets](#)

Color Guard

- Pole
- Flag
- Rifle (36" black bolt, white strap)
- Sabre (36" King) *if assigned
- Electrical Tape
- Gloves

District-Owned Instruments

MCS will provide a limited number of instruments for student use. These instruments include highly expensive instruments such as the bassoon, oboe, tenor saxophone, baritone saxophone, french horn, mellophone, euphonium, tuba, and general percussion equipment. This equipment is generally purchased by the school district for student use because of its extremely high expense. *Thus, all district owned equipment must be handled with optimum care.* Students failing to take proper care of their school-issued instrument may lose the privilege to use such instruments.

The following is a list of general procedures for district-owned instruments:

- Students and parents will be held financially responsible for all district-owned instruments issued to them. This responsibility will include fire, theft, accidental damage, abuse and general maintenance not incurred through normal use.
- Students and parents must sign an instrument checkout form before the student can use the instrument.
- Each instrument will be issued in good playing condition. Each issued instrument will be checked and cleaned prior to issue. Students are expected to maintain their issued instruments accordingly.
- The band member is financially responsible for all equipment and/or materials checked out to him or her. This includes repair of any damages incurred while checked out to the student.
- All equipment and materials must be kept in their proper storage location when not in use.

Special Note

District-owned instruments are not to be treated as "free" instruments. Basic supplies must still be purchased, and repairs must still be made just like personally owned instruments. Please strive to treat these instruments as if they were your own.

Grading Guidelines

MCS band programs have instructional objectives that relate to the mandated MS Dept of Education for grade level subjects or courses. These objectives are aligned to address the academic skills needed for successful performance in the next grade or next course in a sequence of courses. Assignments, tests, projects, classroom activities, and other instructional activities are designed so that the student's performance indicates the level of mastery of the instructional objectives. The student's mastery level of these objectives is a major factor in determining the grade for a subject or course.

Students will be expected to meet the responsibilities for each band class as determined by the director. Since band is an academic music class with some extra-curricular activities attached, the band student's grade will reflect achievement in both curricular and extracurricular areas.

A band member's nine weeks grade will be determined from the following items: student's daily preparation and participation - **30%**, performances- **40%**, and extended classroom activities such as sectionals and before/after school rehearsals - **30%**. For more specific information pertaining to how a student's grade is determined, please consult the director.

The following list is provided to give students and parents examples of items that can be subject to grading. Additional assignments may be given at the discretion of the director.

- The student will receive a grade for each before or after school sectional and rehearsal during a grading period.
- The student will be on task and focused during all rehearsals.
- The student will have instrument, music, pencil, and supplies.
- The student will be prepared to play his/her part successfully.
- The student will mark music and take notes as needed.
- The student will be expected to improve individual music skills.
- The student's individual skill development will be evaluated through taped music tests, individual playing tests, scale tests, and/or written tests.
- The student will be evaluated on improvement of ensemble skills during daily rehearsals.
- The student will be expected to improve his/her performance fundamentals.
- The student will be evaluated for improvement of his/her music fundamentals through daily observation during the "basics" part of each rehearsal and during sectionals.
- The student will be expected to demonstrate correct posture, hand position, embouchure, air production, and articulation as monitored during rehearsals.
- The student will be expected to develop a historical knowledge of the literature relative to their respective instrument.
- The student will receive a grade for each performance during a grading period.

Eligibility

All MCS Bands adhere to the eligibility rules and regulations as stated by MCS. Some band activities are designated as extra-curricular. Students participating in these activities are governed by eligibility requirements. A student shall be suspended from participation in all extra-curricular activities sponsored or sanctioned by the school district during the six-week period following a grade reporting period in which the student received a grade lower than sixty five in any class. Loss of eligibility does not take effect until seven days after the end of the reporting period. Ineligible students are not suspended from practice or rehearsal of extra-curricular activities. The student is not suspended from participation during the period in which school is recessed for the summer or any other vacation time. Additionally, eligibility is determined and monitored by the MHSAA via Dragonfly. ALL STUDENTS AND PARENTS MUST COMPLETE THE REQUIREMENTS FOR DRAGONFLY EACH YEAR.

Travel Guidelines

The band will frequently travel on either school buses or commercial buses. Student conduct is expected to be at the highest level on any trip.

Students must travel to events and return from events on the bus. Any student wishing to arrive or leave with his/her parent must notify a director in writing with parent signature, prior to the event. Permission will be granted or denied based on the circumstances of the occasion.

Students must have all necessary forms (Medical/Travel Release) completed and on file with dragonfly to travel on any trip with the band.

While on the bus students will:

- Remain seated at all times.
- Sit properly in a forward position.
- Keep the bus clear of food, drinks, and debris (At times it may be necessary to eat a pre-game dinner on the bus. Every effort should be made to keep your area clean.).
- Keep all body parts inside the bus.
- Use only approved type/headset radios (no boomboxes).
- Remain silent when addressed by any person in charge on the bus.
- Refrain from loud, boisterous talking, singing, screaming, whistling, inappropriate jokes, etc.
- No public displays of affection.

- Remain silent from the time they step onto the bus until otherwise instructed
- Always follow directives of directors and chaperones

Special Note:

Students are reminded that all performances start and conclude at the band hall. As a member of the band, you are a representative of your school. Always be on your best behavior. If you are in doubt about an action, do not do it! Your conduct at all times should be considered a good reflection on the school, the band, your home, yourself, and the community.

Chaperones

Adult chaperones are a great asset for the band program. Students will treat them as an extension of the band staff. Proper respect will be shown to all adults at all times.

Concert Ensembles

Wind Symphony- Advanced Skills

Symphonic Band- Intermediate/Emerging Skills

Concert Band- Remedial/Emerging Skills

Auditions

All students are required to audition for performance ensembles. The Director of Bands determines audition requirements and will notify students of audition dates, requirements, and results. Directors will serve as an evaluator during auditions. Audition material will reflect the director's anticipated performance level for the students and will be based on prior learning, and auditions may be live or taped at the director's discretion. Students will be re-evaluated periodically for participation in select performance ensembles.

Performance/Rehearsal Requirements for Concert Ensembles

Each of the concert ensembles will perform at various times throughout the school year. Students are expected to participate in the performances of their assigned ensemble. Failure to participate in either rehearsals or performances may result in student removal from the organization at the discretion of the band directors (see general attendance policies).

Performances of the concert ensembles will include but are not limited to the following:

- Spring Concert
- Band Festivals/(Pre-fest evals)
- MHSAA/MBA State Concert Evaluation
- Spring Trip Festival (if applicable)

Concerts/Performances

Concerts and performances are an integral component of the band curriculum. Students should consult their schedules for dates and times. Periodically, the schedule may change, and updates will be communicated via remind 101. The concert begins for the student at the warm-up. Punctuality is essential. A concert concludes after the last group performs and directors have given permission for students to be dismissed. A general report time will be given for all students.

- All concerts are a group effort; thus, attendance is required.
- All concerts are an extension of the classroom and will be graded accordingly.
- Students should be punctual and prepared for each performance/concert.
- In the event a performance causes a student to miss another class, the student is responsible to make up all missed work!
- The appropriate dress for all concerts will be a dress uniform (see Uniforms).
- Students are expected to stay the entire concert.
- Students are expected to help move equipment and “stack-n-rack” chairs and stands when needed.

Section Rehearsals/Master Classes

Sectionals (usually weekly before school during months of August-April) are a required element for membership in the band program make up a part of the participation grade for each student.

Private Lesson Program

Weekly Private lessons are extremely valuable to the individual student and are highly encouraged.

- *ALL* students are strongly *ENCOURAGED* to take individualized private instruction.
- Teachers are screened and interviewed by the Germantown Band Staff.

- Lessons will be given weekly, during the band classes if possible. However, if there is a need for before/after school lessons, every effort will be made to schedule private lessons at times that do not conflict with marching rehearsals, sectionals, or other activities.

Marching Band

Background Information

The Germantown band has enjoyed a high reputation for excellence in music performance, including marching band, for many years. The marching band is the most visible aspect of the band program. The marching band provides performance opportunities for band students while integrating the band program into school and community activities.

Marching Band Participation

As an integral part of the band program, Germantown Band's philosophy is that educationally, historically, and musically, marching band is an essential ingredient in a well-rounded music education in band. MCS believes that music students need to develop the ability to participate and perform in different ensemble experiences which, for band students, includes the marching band. For these reasons as well as the continuum nature of the band curriculum year to year and semester to semester, marching band is required for all high school students who elect to take an academic band performance course. However, students who have medical complications or physical disabilities may be excused from participation at the discretion of the head band director.

Marching Band an Integral Component of State Curriculum Requirements

The music and performance skills and techniques, along with the associated academic skills in the band program, are derived from implementation of the expectations found in the Mississippi Dept of Education. The curriculum specifically includes requirements such as demonstrating musical skills and artistry, performing in different musical mediums, and experiencing music through a wider range of music literature, which are addressed through the marching band. Each performance by the marching band provides students the opportunity to demonstrate musical artistry through the ensemble, individual music performance skills and techniques, marching performance skills and techniques, and critical thinking skills that include auditory, spatial, and visual awareness.

High Academic Standards Maintained by Students

The opportunity for performance is a motivating factor for academic achievement for marching band students, since only by maintaining their eligibility can they continue to

perform. As a result, the directors have documented the fact that the least number of ineligible band students during the year occurs during the marching season.

Color Guard

Students in Color Guard are a part of the marching band and participate in all activities. Band students in Color Guard must be enrolled in the band elective. Students not in band may audition for and participate in Color Guard with the approval of the Director of Bands. There will be separate audition in November for the Winterguard program. Student instrumentalists who participate in color guard are expected to maintain and improve their abilities on their instrument as their first priority.

Rehearsal and Performance Schedules

Rehearsal and performance schedules are determined by each band staff and are published on the band's web site.

Instruments

Marching band students who play an instrument that MCS does not provide (flute, clarinet, alto sax, trumpet and trombone) must personally provide, march and perform with the same instrument they use in band or a second instrument of the same type that is approved by the Director of Bands.

Students are responsible for all maintenance on their instrument, whether it is a district-owned or personally owned instrument.

Marching Band Positions

Performing Member

Students who earn a position in the marching band will carry the designation of primary marcher. A performing member is a student who:

- Successfully completes the audition requirements by the appropriate time.
- Demonstrates high quality marching skills
- Is punctual in report times
- Is present at rehearsals and performances
- Maintains academic eligibility
- Represents the school, school district, band program and themselves with the highest possible decorum and behavioral standards

Special Note: Students who fail to meet the music memorization or other similar requirements including attendance may be penalized by one of the following: a) perform at football game without a mouthpiece b) loss of position as a primary marcher, c) loss of performance opportunity, or d) performance as a marcher only.

Alternate

Those that are offered an alternate position will be placed in the band program and will be given supporting roles, such as prop managers, crew or logistics help. Additionally, if a performing member is hurt or otherwise unable to fulfill their role in the production, a member on alternate status may be given the opportunity to fill-in for that performer. Membership dues and rehearsal/performance obligations for alternates are the same as performing members.

There are many ingredients that are vital to a successful marching program and no one part is more valuable than any other. Examples of ways that students can contribute to the performance are: Marching Winds, Marching Percussion, Pit Percussion, Color Guard, Stage Crew, Pit Crew, and Tech Crew.

Marching Band Rehearsals

- Respect everyone on the marching band field - we are all working toward the same goal.
- Prior to all rehearsals, eat healthy and drink a lot of WATER. Soda and energy drinks are prohibited before rehearsals. At times we will allow and/or provide sports drinks at the conclusion of rehearsal or during a break in an extended rehearsal, but every student must provide, bring and drink their own WATER!
- Be punctual. Aim to arrive 5-10 minutes before practice begins to warm up and review.
- Water breaks are meant for your health. DRINK WATER!!!
- Rehearsal will be silent at all times.
- Standing is the only acceptable position on the marching band field unless instructed otherwise
- Everyone will be expected to vocally count at all times.
- Pay attention to general instructions at all times. Listen attentively and respond appropriately.
- Fundamentals will make us successful. Therefore, we expect everyone to participate fully during and outside of rehearsal.
- Band members should wear their coordinate sheet and have their UDB app on their phone ready at all times.
- Move when instructed quickly and quietly (ex: moving from set to set or after a discussion with a leader).
- “Set” is eyes forward, no talking, no moving.
- When setting forms keep your feet together in first position and mouth closed.

- Remain at “set” until you are told to relax.
- “Parade Rest” means silently standing in the ready position.
- When adjusting the forms, use and memorize your coordinate sheets at all times unless instructed otherwise.
- To keep your spot on the marching field, meet all music, drill and choreography memorization expectations. A performing member could be temporarily “benched” or removed from their performance opportunities if they are not meeting expectations.
- No jewelry during rehearsals except watches.

Marching Band Performances

The primary performances of the marching band will be at the football game and competitions. The marching band will perform at various competitive marching festivals and Marching Contests including the Mississippi Marching Band State Championships and various Bands of America competitions.

Germantown Marching Band Performance Guideline

The band directors in Germantown recognize that the health and safety of their students is a primary concern, as well as their scholastic performance in all of their subjects. The band directors also acknowledge that the season for marching band competitive performances falls within a brief but intense period of time during the months of September through November. Additionally, MCS recognizes the intrinsic value gained by the students from the pursuit of excellence in these programs.

Performance Procedures

- *Report Time:* This will be the designated time at which all members should be at the high school or set location. Students should have all attire and necessary items for the designated performance prior to the report time.
- *Load Time:* This will be the designated time at which all members should be on the appropriate bus with all equipment loaded. All equipment will be checked by the section leaders. Students without appropriate equipment will be sent home and an unexcused absence recorded.
- *Return Time:* This will be the approximate time of return to the band hall.

What to bring:

*When the informal uniform is worn, the students will need to wear their Germantown Band shirt, Germantown Band athletic shorts, low white socks, and tennis shoes with “neutral” laces.

- Garment Bag
- Black Shoes
- Black Socks
- Red Water Jug
- Flip Folder w/ all stand tunes
- Lyre (if necessary)
- Instrument with accessories
- Germantown Band Shirt
- Uniform Apparel w/ shako
- Proper under garments (bike shorts for warm weather, leggings for cold weather)
- Hair Accessories (Hair spray, gel, bobby pins)

Pre-performance Practice:

- Wear black shoes, black socks, Germantown band shirt (or theme shirt designated by a director)
- No fingernail polish
- No jewelry
- Bring all equipment (weather permitting): that means everything (drums, uniforms, etc.)

Music Inspection

Music inspection will occur before all football games and marching band performances that will utilize music which is not part of the field/competition show. Students will be asked to display music, lyre (if appropriate), and flip folder. Students who do not pass music inspection may not be allowed to perform.

Uniform Inspection

Prior to student departure for a marching band performance, students must pass a uniform inspection. In order to board the bus, students must have complete uniform, raincoat/poncho, music, flip folder, and other components for the marching performance. Students who do not pass the uniform inspection may not be allowed to attend the event. Students not meeting uniform, music, and loading guidelines will be subject to disciplinary consequences.

Football Game Procedures

The football game is viewed as a performance of the band program. Such performances include all aspects of the game from arrival to departure.

- More often than not, students will be required to remain on campus after school on game days for a brief rehearsal and info for if food is provided by the boosters will be communicated ahead of time. This is in consideration of time, organization, and safety. Please do not ask for exceptions to this. We will communicate the expectation each week.
- Students will arrive at the designated report time.
- Students will load and be prepared to travel at the designated load time.
- Students will load the buses with all equipment needed for the performance. Members of the Leadership Team will inspect all students boarding buses prior to departure. Students not meeting uniform, music, and loading guidelines may be sent home and not allowed to participate.
- Students will receive an unexcused absence for such occurrences.
- Upon arrival at the performance area, students will don all uniform components and prepare equipment for unloading. Students will unload buses when instructed to do so by a chaperone or director. Exit the bus in proper uniform as instructed by the directors, carrying all necessary equipment in garment bag unless instructed otherwise.
- Instruments that arrived via equipment truck/trailer will be picked up at the designated area when instructed. All cases must be put back in original location with latches closed.
- Upon arrival to the seating area, students will remain standing.
- Water will be provided by the band boosters after the halftime performance. No other food or drink will be allowed in the stands during the game. Students will refrain from accepting food or drinks from parents, relatives, or friends. Parents: please do not offer refreshments to your children.
- Students will be expected to listen for and watch the directors and drum majors during the game. Students will need to be prepared to perform at all times and at a moment's notice.
- Students will refrain from playing their instruments on an individual basis. The band will perform as a group or with approved small ensembles. While playing, always pay attention to the director/drum major.
- At the appropriate time, the band will be dismissed from the stands for the half-time performance. At this time, the band must move quickly, quietly, and efficiently to the appropriate area. Students will need to be focused on the directors' and Drum Majors' instructions.
- At the conclusion of the half-time performance, students will have 3rd quarter off to purchase food through the concession stand and have time to rest. Students will return to the stands, ready to start playing the fastest version of The Hey Song you've ever heard at the beginning of 4th quarter. The downbeat will begin at the buzzer of the start of the 4th quarter. So please be ready!

Instrument Loading/Unloading

- No eating during 4th quarter. No exceptions.
- At the conclusion of the game, students will load buses quickly and efficiently.
- Upon return to the band hall, students will ensure that all personal items, uniforms and instruments are placed in the proper storage areas. The leadership team will ensure the band hall is clean and orderly before being dismissed for the night.
- At the conclusion of each engagement, there may be a brief meeting before dismissal.

Health and Safety of Band Students

Large instruments will be transported on the band trailer/instrument trucks. All others (flutes & clarinets) will transport their instruments on the bus. Students will be responsible for insuring that their instrument or empty case is in the proper location. After the instrument truck/band trailer has been unloaded, each student will be responsible for picking up their instrument and storing it correctly. Students who display difficulty in following the loading and unloading procedures may lose the privilege of utilizing the instrument truck.

The health and safety of our students is our first priority. Every effort will be made to keep our students out of harm's way at all times.

Extreme Weather Conditions - Lightning

We, like the athletic teams, make it a practice to go inside when lightning occurs within 10 miles of our location. Discretion is used to determine immediate threat, as we take lightning and the safety of our students very seriously.

Rain

Under rainy conditions, the band may still rehearse and/or perform at the discretion of the band staff.

Heat/Hydration

We stress to students the importance of hydration at all times, and especially in periods of extreme heat. During extreme heat conditions, we decrease the amount of time between water breaks and/or increase the amount of time used for the break. The weather conditions as well as the physical and mental conditions of our students are monitored continually, and adjustments are made to accommodate whenever necessary. The Germantown Band follows all MHSAA Guidelines with regard to hydration and student safety in summer weather. We also offer water bottle refill stations both at the field and in the band hall during after school rehearsals. **Students MUST bring their water jug filled with WATER to rehearsal EVERY DAY without exception. This is a required material for the class for a grade and their safety.**

It is very important that every student bring and use their own personal water jug. Sharing water (and food) leads to the spreading of germs that cause viruses such as cold, flu, mononucleosis, and Hepatitis B as well as many other bacterial infections. Sharing water is not acceptable.

Nutrition

It is important for all students to eat healthy and well-balanced meals every day. During summer band camp, students need to eat a healthy breakfast every morning. Stay away from milk and greasy breakfast foods.

Students need to bring a healthy sack lunch to summer camp. Fried foods, salty snacks, soft drinks, and sweets can and will lead to poor health and performance. Students need to eat EVERY MORNING. The first day of camp is not the time to “start a diet”.

It is recommended that students eat:

- wholegrain breads and cereals
- vegetables (particularly leafy green varieties)
- Fruit
- lean meat
- low-fat dairy products (minimal)

These will enhance long-term nutritional habits and enable our members to achieve ideal body weight and health goals for optimal performance.

Drink plenty of water!

As the new school year begins, students should continue their healthy diet throughout the day. Continue to eat a healthy breakfast every morning. Eat a healthy lunch. Stay away from greasy foods such as pizza, chips, and candy during the school day. Lunch from the vending machines is not appropriate.

Students should continue to drink plenty of water throughout the day to stay well-hydrated for afternoon rehearsals. HYDRATE, HYDRATE, HYDRATE! ALL DAY!

Uniform Guidelines

Students are expected to follow the listed uniform guidelines. No variations will be allowed.

GENERAL

- Marching Band uniforms will be issued during summer band camp. Band uniforms will be stored at school in the uniform storage area.
- Concert Uniforms are formal back attire. Individual families are responsible for this purchase. Description of these items TBA.
- Students will be held financially responsible for the marching uniform and all components.
- No unapproved alterations to costuming is allowed. All alterations to costuming **MUST** be approved by a director before they are made.

ISSUE AND RETURN

- Students will pick up uniforms from the uniform room at least 15 minutes prior to report time for any event.
- Students should follow the posted pick up/return guidelines. Students who do not follow these guidelines will be sent to the end of the pick-up/return line.
- Students will be issued a uniform storage cubby.
- Students not properly hanging the uniform will be added to uniform duty for the remainder of the season.

DONNING THE UNIFORM

- Always wear and treat your uniform with pride. The uniform should be worn as a complete unit at all times when in public. The only exception to this will be when a director instructs you that you may remove your hat or coat. Loading crews may be exempt from wearing the uniform during loading/unloading procedures. *Do not run while in uniform!*
- The Germantown Band shirt is to be worn under your uniform. The band shirt will be part of pre-performance inspections.
- You must wear approved black band shoes and black socks (student purchases).
- Jewelry, hair ribbons, and bright colored nail polish etc. are unacceptable while in uniform. These items hinder the uniform appearance of the band.
- Band students with long hair will need to put it up under their hat during performances. Hair must not touch the collar of the jacket and must be above the top of the ear or pulled behind it. No visible hair on forehead.
- No consumption of food and drinks (other than H₂O) while in uniform without permission.
- Safety is always our priority. Unnaturally long fake nails pose a hazard and risk to the individual and others around them. This prevents students from playing their instrument

with proper technique. These types of nails are prohibited during rehearsals and/or performances regardless of social events at or around that time.

CARE

- Always hang the pants by the crease, careful to avoid wrinkles, and lock the dowel into the metal catch to keep the pants secure.
- Wash the uniform separately in “cold” water on the “delicate” cycle. Use a mild detergent.
- Students should regularly wash the uniform per the guidelines for care and hygienic reasons.

Color Guard

- Make-up will be worn as instructed by the director.
- Hair will be styled as instructed by the director.
- Only prescribed accessories that are part of the uniform may be worn.
- Changes in hairstyle should be approved by the Guard Director prior to making any change. This could affect the performances for both marching band and winter guard.
- Safety is always our priority. Unnaturally long fake nails pose a hazard and risk to the individual and others around them. This prevents color guard students from spinning with proper technique. These types of nails are prohibited during rehearsals and/or performances regardless of social events at or around that time.

Color Guard Information

Color Guard Uniforms

- If your costume needs altering, please see the color guard director for permission to do so. No unapproved alterations to costuming is allowed. All alterations to costuming MUST be approved by a director before they are made.
- Wash the uniform separately in “cold” water on the “delicate” cycle. Use a mild detergent.
- The uniform should be laid flat to dry. DO NOT hang uniform to drip dry. The uniform material will stretch out of shape if you hang to dry.

UNIFORM COSTS

If a uniform part is damaged or lost, the student will be responsible for the replacement costs. See Financials for costuming fees.

Dressing out- required for ALL during marching band

Dressing out is required during rehearsal and is part of the daily grade. This is critical for both a successful rehearsal as well as student health and safety. Dress-out clothes consist of:

- T-shirt or tank top
- shorts
- socks
- tennis shoes w/ arch
- sweat shirt (when cold)
- sweat pants (when cold)

Tote Bags

The following items are to be kept in the tote bags. Additional items may be included at the discretion of the director.

- hair spray
- bobby pins
- hair clips
- deodorant
- make-up
- uniform parts (i.e. gloves)
- electrical tape
- warm ups (when applicable)

Practice

When practicing, concentrate on technique. Pay attention to the details of both body and equipment. Do not “just go through the moves/routines” half-heartedly reiterating mistakes. Define each move as explained in class.

Winter Guard

Students in the Color Guard will also take part in the Winter Guard program during the spring semester based on their audition in November. Wind players who would like to participate in Winter Guard must continue to “double block” band. Winter Guard rehearsal dates, performances, and cost will be determined and communicated to the participating students and their parents in a timely manner.

PARTICIPATION GUIDELINES

Because of the continuum nature of the GHS Band program's curriculum, no exception will be made for students wishing to participate "a la carte" in the GHS Band Program. All instrumentalists are required to participate in both marching season and concert season (fall and spring semesters). A student will not be permitted to participate in only 1 semester of band. At the conclusion of the school year if a student wishes to discontinue their membership in band they will be permitted to do so by not auditioning for the upcoming year. Simply put, students are required to participate in band during both semesters of a given year.

Beginning in 2025-2026 and in perpetuity.

Colorguard/Indoor Percussion Instrumentalist Membership and Eligibility

Any student that is an existing instrumentalist in the Germantown Band Program will not be permitted to cease playing their primary instrument and only participate in the color guard and/or winterguard or indoor percussion program(s). Students must commit to playing their instrument and remain in the color guard, winterguard and indoor percussion programs for the duration of their career in the Germantown Band. Furthermore, any student that wishes to participate in color guard/indoor guard and/or indoor percussion must endeavor to improve on their primary instrument to be eligible for participation in color guard activities or indoor percussion.

As a band program, our primary goal is instrumental music education. While we are very thankful and excited that we can offer ancillary enrichment opportunities through our other program offerings such as indoor activities, etc., the cornerstone of our program is and will always be instrumental music education and music literacy. Therefore, lack of student participation in those core activities runs counter to our goals as an organization and an educational institution.

MEMBER JACKETS

The GHS Band Letter is first a recognition of "*Significant Service and Dedication*" to the GHS Band Program, manifested by hours upon hours of practice, patience, and perseverance as well as sacrificial giving of time and energy for the good of fellow band mates, the directors, and the band as a whole. Students who have successfully completed one semester of marching band and are in good behavioral and financial standing with the GHS band program, will be eligible to purchase a member jacket. Forms will go out in November and money will be due cash, check, venmo or cashier's check early December. If a student misses the deadline to order, they will have to wait until the following year to submit their form again.

Student Leadership



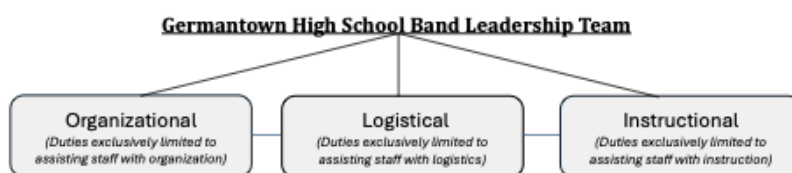
Leadership Team

Horizontal Leadership Structure

Rather than a traditional vertical hierarchy, the Germantown High School Band Leadership Team will be organized as a horizontal (or flat) leadership structure that operates on inclusivity, mutual trust and shared, wholistic responsibility between all leadership team members.

The purpose of this horizontal structure is to streamline communication, increase efficacy and promote shared accountability towards the common goal of making the Germantown Band the best it can be in all areas of endeavor.

As such, the Leadership Team will be organized into 3 units that are tasked with different, yet specific, duties. The units are staffed based on those team members' leadership qualities that are best suited for each unit as determined by their leadership application and audition.



The duties and particulars assigned to specific units will be announced and explained to Leadership Team members after selection during Leadership Team orientation. Unit assignment is determined by the band directors based on application/audition.

Those assigned to each unit will collaborate with staff and each other and will execute objectives as they are determined by the directors/staff or as a team.

While the Leadership Team, as a whole, will partake in shared decision-making for goals, strategies and to an extent, objectives, each unit will be responsible for carrying out objectives as they are assigned. This is to promote optimal productivity of each unit as well as direct accountability for those within that unit.

Every caption is included in this new model. Membership on the Leadership Team could be revoked at any time during the season, if warranted, at the discretion of the band directors. Examples of removal of the leadership team include but are not limited to:

- More than 3 unexcused tardies (to rehearsal, events, class, etc.)
- An unexcused absence
- School discipline (in-school suspension or out-of-school suspension)
- General lack of positive attitude and/or unpreparedness

To clarify: the roles of section leader, captain and horn sergeant have been disbanded in favor of this leadership model to promote a healthier and more effective environment. As a Leadership Team, we will move "arm-in-arm" towards all our goals.

Band Boosters

The Germantown Band Boosters exist to assist the band staff and students in reaching band program goals. All parents and guardians of band students are considered boosters. The GBB meets quarterly (August, November, February) in the GHS Band Hall and holds a larger annual meeting in the GHS Cafetorium in late April to elect new officers.

The boosters provide support to Germantown Bands through both fundraising and volunteering. Fundraising activities include concession stand operations during football season, selling merchandise,

and securing sponsorships, as well as our annual ChiliFest event and band fundraisers. As volunteers, boosters often chaperone trips, serve meals to students before games and at competitions, assist in areas of marching band and indoor program production, and host events. There is a place for every parent in this organization. Your service is not only encouraged but also vital to our success. For more information, please visit our website at <https://www.madison-schools.com/domain/1591>, email us at gbandboosters@gmail.com, and follow us on Facebook (Germantown Band Boosters) and Instagram (@germantownbandboosters).

Parent/Guardian Conduct and Guidelines

Event Day Procedures (EDP)

For the safety and well-being of all band students, parents and guardians are asked to follow Event Day Procedures. These pertain to activities that are school-related but may not occur during the school day (competitions, games, performances).

- When picking up and/or dropping off your student for a game, competition, or performance, please do not enter the band hall. Parents are asked to wait in the parking lot to pick up their students. As soon as students are officially dismissed, the directors will make sure the students exit the building in a timely manner. This is to protect all of our students and is especially important during game nights when our campus is open to hundreds of visitors. While we know every student's face, we do not know every parent, sibling, cousin, grandparent, or friend's face. In order to avoid any security lapses, only students, directors and booster officers will be allowed in the band hall.
- Band hall doors are always locked. When students are in the band hall, they are continually monitored by staff. Should you have an emergency and need access to your student, please knock on the side door of the band hall and a staff member will assist you.
- If you have a concern or problem involving your student during a game, competition, or performance and need immediate assistance, please find or contact a booster officer. These individuals will either help you or connect you with a staff member.
- Please make necessary arrangements for timely transportation for your student to and from all events. If you have a student driver, please encourage him or her to leave early in order to park and walk to the band hall for call times.

- Students should never leave an event without proper parental consent and/or being signed out (at the conclusion of away games, competitions or other events happening off campus.) Directors will notify students and parents of the appropriate method of checkout or permission for each activity (sign-out sheet, email, form, etc.)

Volunteer and Chaperone Guidelines

When serving as an official chaperone on a Germantown Band overnight trip, please adhere to the following:

- All Chaperones will need to be background checked by Madison County Schools. Cost is \$40 (cash, to be paid to the attendant at central office) and must be completed before the trip.
- We want to respect the privacy of all students. Do not enter student rooms, even if your child is staying in that room. During waking hours, your student may come to your room or you can arrange to meet them in the hallway or downstairs.
- Be present and aware of student activity during waking hours, both on hotel floors and downstairs in lobby, gift shops, and dining areas while the group is eating or waiting to depart.
- Students should not exit the hotel unless instructed to do so by staff.
- Adults should never be alone with a student that is not their child. Students should always stay with a buddy or in small groups while on a trip.
- Please follow the directions provided by directors and/or the trip coordinator regarding chaperone assignments, checking rooms, and supervising students. When unsure, please check with a band director or booster officer for clarification.
- Refrain from alcohol use while serving in an official chaperone role.

When volunteering in any capacity for Germantown Bands, please adhere to the following:

- As volunteers, parents should seek to provide support to staff and students. Please do not interfere with band activities (rehearsals, camps, games, competitions, or performances.)
- If a situation arises with a student (medical, emergency, etc), please notify a staff member and/or booster officer immediately so that we can seek help for that student.

- Never offer medication to any student that is not your child. We adhere to specific Madison County School guidelines and processes regarding the dispensing of medications.
- We expect all volunteers to treat staff, students, and other adults with respect and kindness. We also expect our students to treat staff, adults, and other students with respect and kindness. If you encounter a student situation that you feel requires correction or disciplinary action, please report that concern to a staff member so that it can be appropriately addressed. Please do not attempt to discipline a student.
- Complaints filed against volunteers will be evaluated by The Director of Bands and GHS Administration to determine the legitimacy of the concern and if that individual can effectively continue to serve within our organization. If warranted, the complaint may be brought to district-level administration for further consideration.
- Per MCS campus rules, please refrain from alcohol and tobacco use while serving as a volunteer on the Germantown campus.
- Germantown Bands and/or the Germantown Band Boosters may require background checks for volunteers and chaperones that are in close contact with students. Examples include but are not limited to executive committee officers, medical volunteers, and overnight trip chaperones.

Social Media Guidelines

- Please do not post full video or clips of marching band or indoor show performances to social media. We purchase copyrights for music used by Germantown Bands but that does not include the right to stream or post video on media services. From time to time, staff will provide a private link for educational purposes that you are welcome to view and share with family and friends privately.
- If a staff member or booster officer requests that you remove or edit a post containing footage of the Germantown Band, please keep in mind that our goal is to maintain a competitive edge for our students and protect the copyrights to the music.
- Parents are expected to promote good sportsmanship when making posts pertaining to their student's involvement in the Germantown Band. We ask that parents not criticize

other school band programs but rather celebrate and congratulate the efforts of our students, or of all young people that participate in this activity. Please keep in mind that when you identify Germantown Bands in your social media posts, those words reflect on our band program and ultimately our students and staff.

Off Campus Medication Procedures

Medication may be administered during off-campus event:

1. A parent or guardian's written request that there is a need for medication during the school day and the parent/guardian brings the medication to the designated drop-off site. This includes both prescription and over-the-counter medications.
2. All medication must be kept in a secured location and administered by trained MCS employee or trained chaperone. The only exception being any diabetic or emergency medications that have an MCS signed self-carry form (may copy/use signed form from campus clinic).
3. No medication can be dropped off or picked up/sent home by a student. Parents/Guardians must pick up all medications whether prescription or over-the-counter.
4. Over-the-counter medication must be in the original bottle or box with the label intact and non-expired. Dispensing directions regarding age, dose and frequency will be strictly adhered to. Request to alter the standard dosage or frequency on

over-the-counter medication must be accompanied by a physician's written note and signature.

5. Prescription medication must be in the original container and non-expired. It must be properly labeled in a prescription bottle/box with the student's name, medication name, directions for dispensing the drug and written by a physician licensed to practice in MISSISSIPPI. A physician's signature is required for any dosage or medication change on prescription medication. All PRN (as needed) prescription medications will need a physician's signature.
6. Medications (controlled substances) will be counted by either a trained MCS employee or trained chaperone upon arrival at drop-off site and documented as to the number of pills received. Narcotic pain medications prescribed for temporary medical conditions will not be stored or administered. Medications must be delivered by the parents/guardians.
7. A student may be allowed to self-administer inhaled asthma medication, an Epi-pen, or diabetes treatment ONLY if the following conditions have been complied with: a. Written permission from the physician allowing the student to self-medicate or treat b. The nurse has counseled the parent and the student on the school's inability to monitor the student's health condition during the school day while self-medicating or treating c. The student complies with all campus safety policies
8. No district employee or trained chaperone will administer herbal substances, anabolic steroids or dietary supplements except as prescribed by a physician if it is required by the IEP or Section 504 plan of a student with a disability. Medication must be provided by student's parent or guardian. Reliable information must be given by the physician regarding the safe use of the product including side effects, toxicity, drug interactions and adverse effects.
9. It is the responsibility of the parent/guardian to ensure all health/medical and medication information is current as of the day of the off-campus event.

10. All private health information (PHI) will be stored in a secure location when not at an off-campus event. When information leaves the housing campus for an off-campus event it will be signed out by a MCS staff member or trained chaperone. That person is responsible to keep PHI secure & confidential during the event, then sign-in & return information to housing campus when event is over.

Check out procedures

Students are allowed to check out with their Parent/Guardian following band events. A google form for check outs will be sent out no less than 24 hours prior to the event. This form will be sent out via remind 101. This form serves as both acknowledgment and consent that the student will be riding home with a parent and guardian. All items in the form will be required to fill out.

Parents/Guardians that are checking out students will need to do so along with their student at the bus. The parent/guardian will need to sign out their student with a band director before the student is dismissed. This is to prioritize safety and supervision.

Germantown High School Band

EVENT DAY PROCEDURES (EDP)

(Games, Competitions, Performances)

1. **To be on time is to be late, to be early is to be on time.**
Students should arrive about 15 minutes early before every major event.
2. **Students should never leave during an event without proper parental consent prior to the event—this includes documented consent submitted to a director 24 hours before the event.** Students will need to attend the event in its entirety unless there is another school activity or similar (ACT Test, etc..) IF there is an emergency, the parents will need to either check the student out personally, or, contact a director via MCSD email. Students that are checking out after an event will need to provide documentation 24 hours prior to the even and ONLY the specified individual in the consent will be able to check them out.
3. **After events: in most instances there will be a short period of time where the students will have to turn in uniforms, clean their areas and put away certain equipment.** The students are not allowed to leave after an event until the directors dismiss them. This usually takes about 10-15 minutes after the event's conclusion. During this time, only band booster officers, directors and students are allowed in the band hall. Parents will need to wait in the parking lot for their students to finish. As soon as the students are officially dismissed, the directors will make sure the students exit the building in a timely manner. This is to protect the students. Especially during game nights our campus is an open campus. While we know every student's face, we do not know every parent, sibling, cousin, friend or grandparent's face. Thus, to keep from having any security lapses, only students, directors and booster officers will be allowed in the band hall.
4. **Students need to be picked up/ checked out in a timely manner.** We will distribute schedules at least week before the event and will include the dismissal time in the schedule. Please make necessary arrangements for timely transportation for your student after all events.



2024 GHS BAND REQUIRED MATERIALS LIST

The following are required/graded materials and should be with you at every marching rehearsal/camp, etc.

- Instrument/Equipment
- 1" black binder with all music in page protectors and a pencil
- Ultimate Drill Book (UDB app) on your phone. More information on this to come.
- Personal Water Cooler-VERY IMPORTANT!
- Hat- Everyone must have and wear a hat for protection from the sun- no exceptions!
- Tennis shoes with socks- NO FLIP FLOPS OR SANDALS
- Comfortable, loose-fitting athletic clothing.

IT IS HIGHLY RECOMMENDED THAT YOU PURCHASE THE REHEARSAL GARMENTS IN THE ONLINE STORE PROVIDED BELOW. But, students are not "required" to purchase their white shirt and black shorts. However, hornline and battery must have at least one white t-shirt and one pair of black athletic shorts (even if they are a generic plain white t-shirt or something similar) for Thursday night rehearsals and undergarments for their uniform. Ladies may purchase the sophie shorts if they chose, regardless of section. Guard members must purchase the red 2024 tank and the sophie shorts. Ladies in the hornline/percussion are allowed to purchase the sophie shorts if they would like.

STORE IS NOW LIVE!

Cut off for orders is June 7th at 11:59pm!

<https://www.bluffcitysports.com/germantownband/shop/home>

The GHS Band does not turn a profit on these materials, and they are sold by a third party.

Additional materials:

- Long black socks for Thursday nights and performances (everyone but guard)
- Band shoes/ guard shoes for those that do not already own—you must purchase these specific shoes.

The shoe fitting date will be:

- When: TBD- during Full Camp in July.
 - Who: New members or those that need new/ additional shoes
 - Time: 12:30-2:30
 - Band shoe: Super Drillmasters (Black) \$55.00- cash only
 - Guard shoe: Everjazz (Nude) \$52.00- cash only
 - Gloves: Hyperformance gloves (White) – Brass: \$13.00. Woodwinds: \$14.00
- All hornline/guard members will be provided with one pair of performance gloves by the band. If you would like to purchase extra gloves for rehearsal or just in general, you can purchase those at that time, or online. But they MUST be the type of glove listed above*

STUDENT/PARENT AGREEMENT 2024-2025

I have read and understand the Germantown High School Band student handbook. I have read and agree to the policies, procedures and consequences outlined in this document.

Student
Signature_____

Student (Print):_____

Guardian
Signature_____

Guardian (print)_____

Date_____

THIS FORM DUE ON OR BEFORE JUNE 1st
TO FINALIZE MEMBERSHIP FOR 2024-2025

OPTIONS FOR TURNING IN THIS SIGNED FORM:

- VIA CANVAS GHSBAND24 MODULE
- MAIL TO: GHS BANDS 409 CALHOUN PARKWAY MADISON,MS 39110
- IN PERSON TO A BAND DIRECTOR
- SCAN & EMAIL TO jharvison@madison-schools.com